




aeroavance
www.aeroavance.com

we keep moving forward
AERONAUTICAL DOSSIER



Welcome to Aeroavance

Founded in 2004 by a highly experienced team in the milling and shaping of aeronautical elements. We currently offer INTEGRAL MANAGEMENT of the product, from purchase to final delivery after final processes. We follow a business philosophy based on:

- Quality guarantee.
- Focus on customer.
- Continuous improvement.
- Competitiveness.
- Customer satisfaction.

Apart from the aeronautical sector, Aeroavance develops projects in many other sectors like the naval, automotive, civil works, machinery construction...

We keep moving forward



Quality guarantee & product assurance

Our quality system is certified since 2006. Various Lean tools and our product know-how have ensured that our level of defects and product quality are considered by our customers within the framework of EXCELLENCE.

Obtaining Delegated Quality by AD&S in June 2018.

We have certifications covered under the EN 9100:2018 and UNE-EN-ISO 9001:2015 standarts.





Main customers



AIRBUS



AERnnova



AERCAL

sofitec



ALESTIS
AEROSPACE





Clients & programs



AIRBUS


aerotecnic


Airgrup

AERnnova

- FAN COWL B737MAX
- FAN COWL A320NEO
- A330, A350, A380, MRTT
- A400M, C-295, C-235, EFA...
- EDGING
- WATER JET CUTTING
- AUXILIARY MACHINING
- FOLDING
- CONFORMED

- A350, A380, MRTT
- A400M, C-295, C-235
- FALCON, KC 390
- INTEGRAL MANAGEMENT OF ELEMENTALS

- B737MAX
- PYLON A330 Y PYLON A350
- A330, A350, A380, MRTT
- A400M, C-295, C-235, EFA
- EDGING
- WATER JET CUTTING
- AUXILIARY MACHINING
- FOLDING
- CONFORMED

- A320NEO
- C-SERIES
- KC 390
- A330
- SUPERPUMA
- WATER JET CUTTING
- INTEGRAL MANAGEMENT

Manufactured programs



A340



A380



737MAX



C-SERIES



A400M



A330MRTT



A320NEO



A350



FALCON 7X



ERJ 170/190



EUROFIGHTER



C295



Productive lines



aeroavance



Edging by CNC milling



Milling of aluminium alloys in all of their termical treatments and states (T3, T0, T6, T761...).

This technology is also suitable for other types of materials (copper, teflon, thermoplastics...).

Currently, we have 2 milling machines with 3-axes technology 24Kw and 25000r.p.m.

CNC MILLING BERMAQ FCF-146:

It has an effective work surface of 4000X1500mm divided in two tables.

CNC MILLING BERMAQ FCN:

It has an effective work surface of 4000X2000mm divided in two tables

Materials



aeroavance



SHAPE TECHNOLOGIES GROUP®

Waterjet machining



Waterjet cutting of all types of material (steel, titanium, polyamide...). This technology is currently focused on the manufacturing of elements and the realization of inputs states for machining. Currently, we have 2 waterjet machines with 3-axes technology for thicknesses up to 200mm.

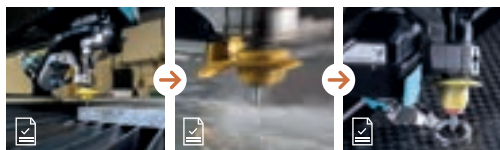
TCI WATERJET WC:

It has an effective work surface of 3000X1500mm y 4000 bars of pressure.

Flow WATERJET WMC2:

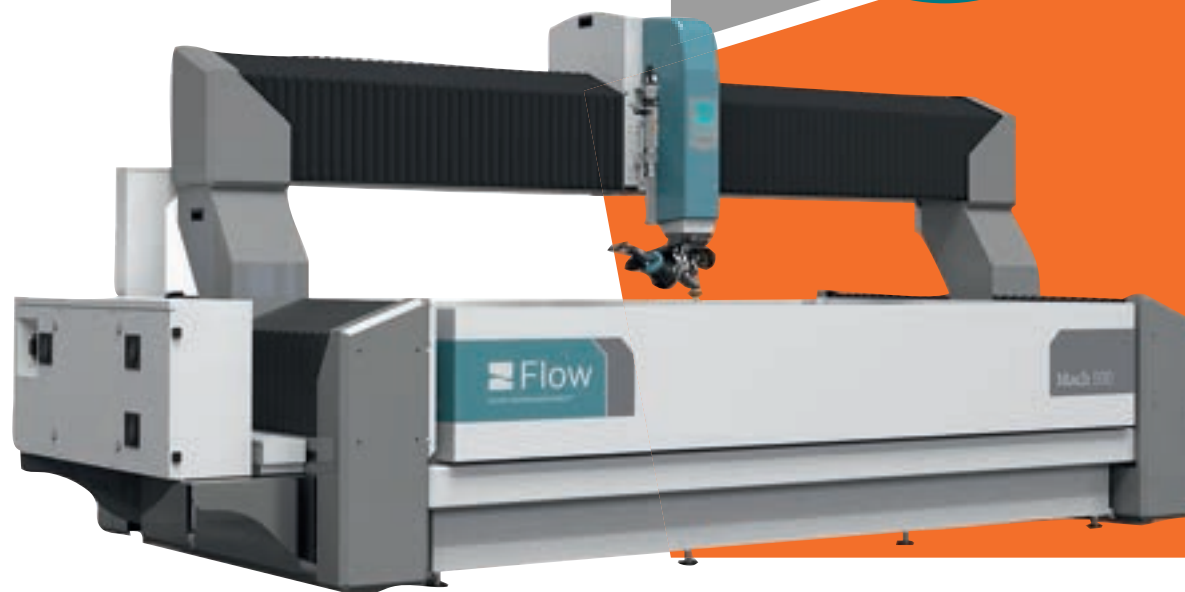
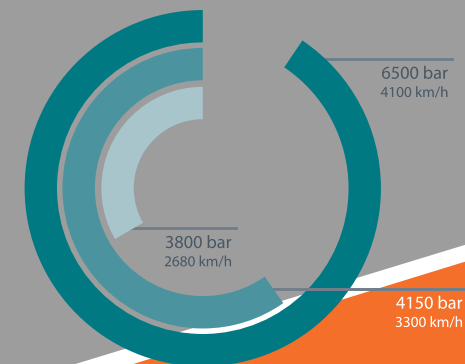
It has an effective work surface of 4000X2000mm y 6000 bars of pressure.

Water jet cutting



©Flow pump technology

The pump is the heart of your water jet. Higher pressure offers faster cutting and lower cost per piece



aeroavance



Láser cutting technology

Laser cutting of all types of metallic materials (steel, titanium, aluminium) This technology is currently focused on the manufacture of elemental materials. We currently have a 3 axis machine with a quick exchange table

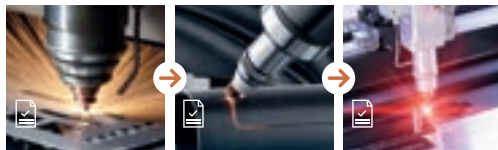
Hymson edger:

It has an effective work surface of 3000X1500mm and 3Kw.

High cutting efficiency, high cost performance and low running cost.

High cutting performance for copper/brass, aluminum, stainless steel and carbon steel.

Láser cutting



| Materials | Cut thicknesses |
|--------------|-----------------|
| Steel Inox | 10mm |
| Aluminium | 8mm |
| Brass | 6mm |
| Carbon steel | 20mm |

Applications

- Multiple functions
- Fiber laser cutting system
- Multifunctional cutting
- Intelligent drive



aeroavance



Milling machining

Specialized machining in auxiliary sheet metal (recesses, wedge milling, pool milling, countersinks, laminates...). Within our manufacturing catalog of other types of elements (accessories, supports...) We currently have 2 machining centers with 3 axis technology.

CNC AKIRA SEIKI V5 MACHINING CENTER:

It has an effective work surface of 1300X550mm and 700mm depth.

CNC CHEVALIER F-2040HB MACHINING CENTER:

It has an effective work surface of 1350X350mm and 500mm depth.

Machining & milling



Characteristics

Greater efficiency and price-performance 10,000-12,000rpm | 20-35HP



aeroavance



Folder machine



The folding of aeronautical elements in the industry is a widely used process to provide resistance and rigidity to the metal sheet and/or to change its moment of inertia.

FOLDER ERMAK AP-2100MM.

FOLDER ERMAK AP-1270MM.

FOLDER ERMAKSAN ECO 3000MM

Folding of parts



Characteristics

- Ermaksan numerical control
- 2-axis motorized rear stop
- Motorized compensation table
- Automatic pumping



aeroavance



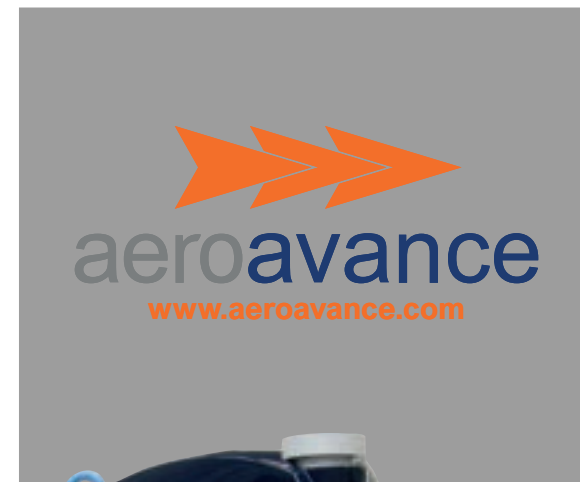
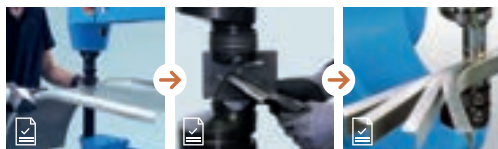
Shaping



The shaping of aeronautical elements is a Core activity within our organization, being specialists in elastoforming and manual adaptations to the geometries required by the product and tooling associated with it.

- Hydraulic cushion press 600x600mm.
- Electric water dispenser PICCOLO Eckold.
- Manual imbiber Eckold.
- Forming rollers.
- Auxiliary tooling and folding radii.

Shaping of parts



aeroavance

Equipped & assembly



Specialists in equipping elements and small subassemblies. We have a first-class human team, all types of auxiliary tools and a clean room to carry out both dry and wet assembly operations.



aeroavance

Tooling design and manufacturing



We are specialists in the manufacture of aeronautical manufacturing tools (DBMA, CLFO, PLDF) and auxiliary tools (assembly stands, carts, auxiliary tables)



aeroavance



Machines & auxiliary means

Rhubarb COSTA-LEVIGATRICI

Deburring pump VIBRO VIB ER 350 CP with dryer SAVT -50E / SAVT 70E

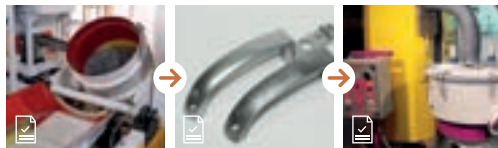
Manual lathe and milling machines.

Band saw ETMS 1825.

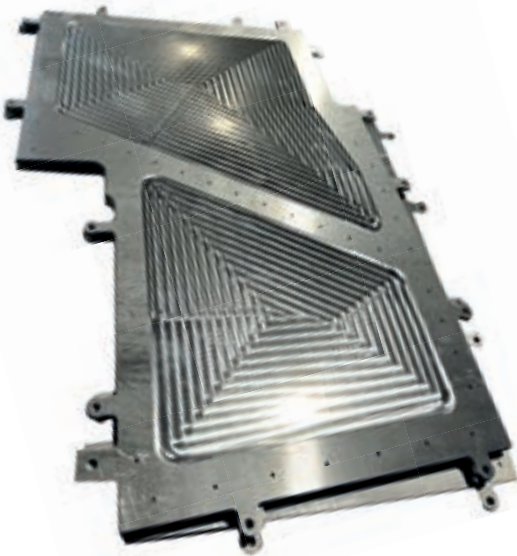
Column drills.

Raw material cutting shear AJIAL 4000mm.

Deburring of parts



aeroavance



aeroavance

www.aeroavance.com

Samples

www.aeroavance.com



Technology



Quality



Innovation



Improvements



Satisfaction



Personalized attention

we keep moving forward

aeroavance



Pol. Ind. El Trocadero C. Francia, 26
11510 Puerto Real (Cádiz)
Tel. 956 266 376

